

## FUTURE POSSIBILITIES

- PARK SITE ENVISIONED AS A YOUTH ATHLETIC COMPLEX WITH BASEBALL, SOCCER, LACROSSE, ICE HOCKEY, ICE SKATING, BASKETBALL, AND A SKATE PARK. A FUTURE COMMUNITY CENTER IS ALSO PLANNED FOR PARK SITE.

## YOUTH ATHLETIC COMPLEX

- PARK ENTRY OFF OF DEERBROOKE PATH
- 5 FLEXIBLE YOUTH BALL FIELDS WITH LIGHTING, ELECTRICAL OUTLET AT MOUND, BLEACHERS, STORAGE, FENCING AND IRRIGATION
- CONCESSION BUILDING INCLUDING SPACE FOR RESTROOMS
- PRACTICE AREA / BATTING CAGES
- FLEXIBLE SOCCER / LA CROSSE FIELD AREA ACCOMMODATES 2 FULL SIZE SOCCER FIELDS (225' X 360'), 1 LACROSSE FIELD (225' X 360') WITH LIGHTING AND IRRIGATION. CAN BE DIVIDED UP INTO SMALLER GAME OR PRACTICE FIELDS.
- 450 (APPROXIMATELY) PARKING SPACES
- 1,200 SQ. FT. EQUIPMENT STORAGE BUILDING
- ICE HOCKEY/IN-LINE SKATING RINK
- PLEASURE SKATING AREA
- WARMING HOUSE
- BASKETBALL COURT
- 2 LIGHTED TENNIS COURTS
- PRE 2-5 AND 6-12 YEAR OLD PLAYGROUNDS
- PICNICKING
- RAINWATER GARDENS

## POTENTIAL ADDITIONAL PARK LAND ACQUISITION EAST OF DEERBROOKE PATH

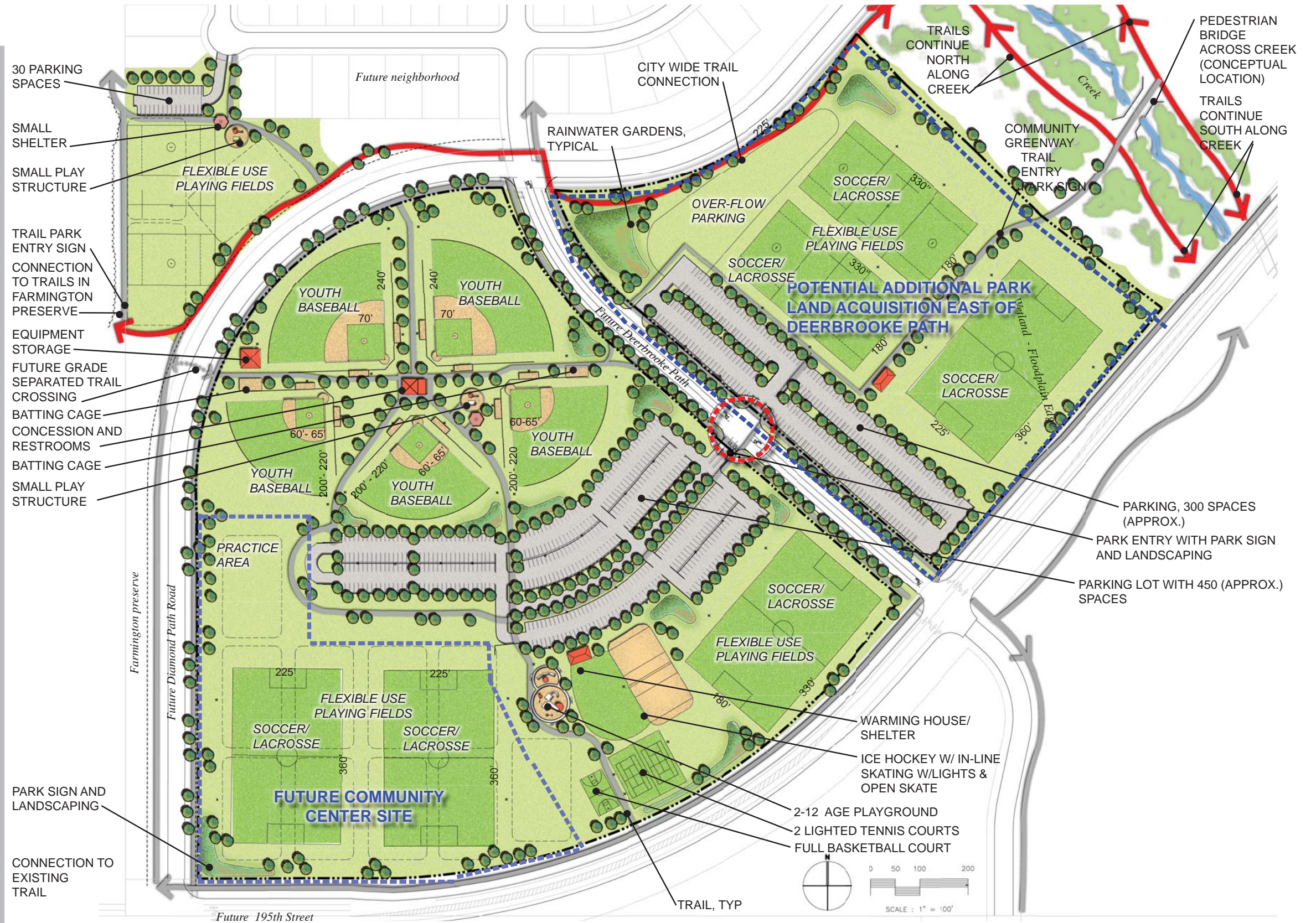
- FLEXIBLE PLAYING FIELDS ACCOMMODATE 2 LACROSSE FIELDS (225' X 360') AND 1 SOCCER FIELD (225' X 360') WITH LIGHTS AND IRRIGATION. CAN BE DIVIDED UP INTO SMALLER GAME OR PRACTICE FIELDS.
- PICNIC SHELTER
- 300 (APPROXIMATELY) PARKING SPACES WITH OVERFLOW PARKING POTENTIAL
- CONNECTIONS TO CITY-WIDE TRAILS

## POTENTIAL TRAIL CROSSING OVER FUTURE DIAMOND PATH ROAD

- OVER OR UNDER PASS FOR TRAIL (LOCATION TO BE DETERMINED)

**PARK SIZE: APPROX. 37ACRES**

**POTENTIAL ADDITIONAL PARK LAND ACQUISITION: 12 ACRES UPLAND**



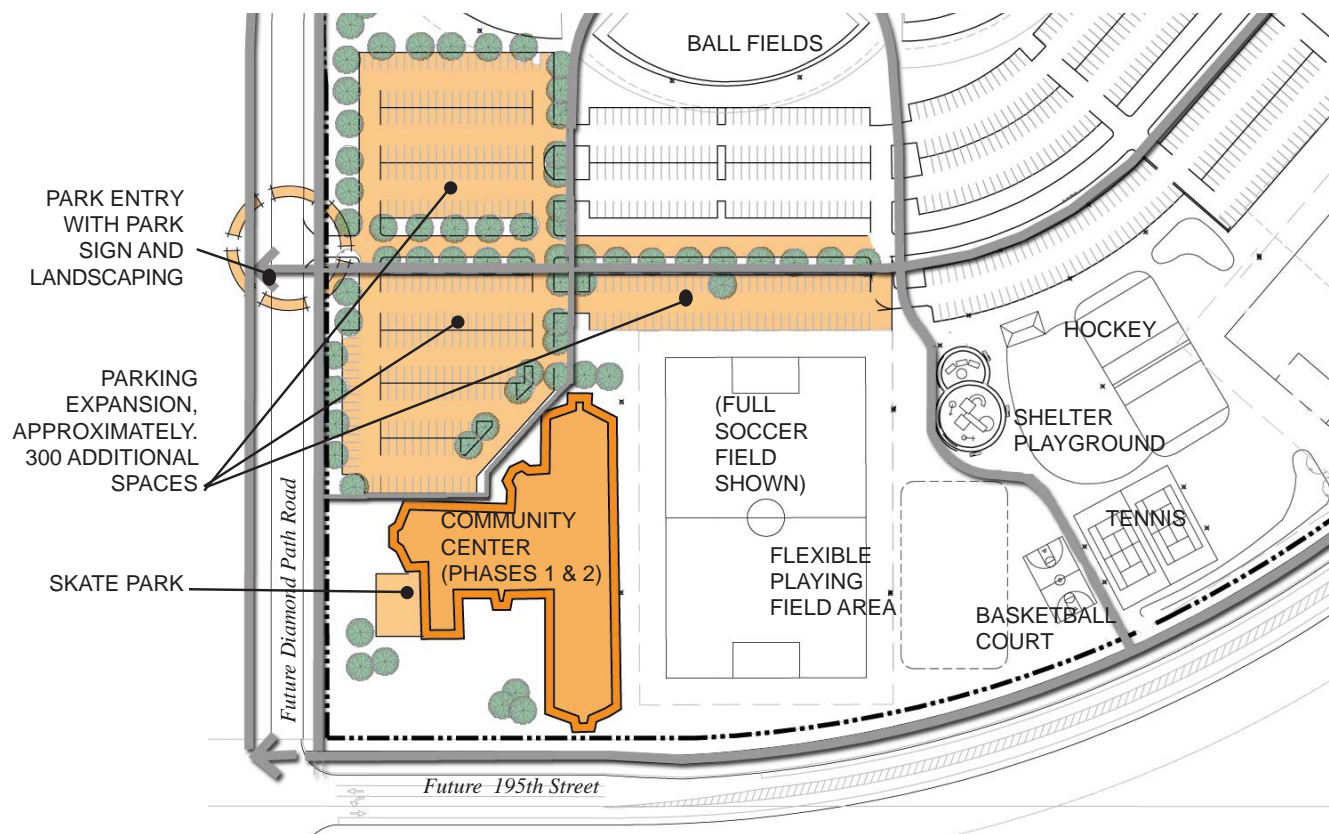
**FUTURE SITE OF THE FARMINGTON COMMUNITY CENTER  
 COMMUNITY CENTER**

- CONSTRUCTION OF COMMUNITY CENTER - PHASES 1 AND 2
- SECOND PARK ENTRY ON FUTURE DIAMOND PATH ROAD
- 300 (APPROXIMATELY.) ADDITIONAL PARKING STALLS
- SKATE PARK
- REDUCTION OF SOCCER / LA CROSSE PLAYING FIELD AREA (APPROX. ONE SOCCER FIELD)

**POTENTIAL LONG TERM COMMUNITY CENTER EXPANSION**

- EXPANSION OF THE COMMUNITY CENTER
- 300 (APPROXIMATELY.) ADDITIONAL PARKING STALLS
- REDUCTION OF SOCCER / LA CROSSE PLAYING FIELD AREA (APPROX. ONE SOCCER FIELD)
- SIZE OF THE REMAINING SHARED SOCCER / LACROSSE FIELD MAY NEED TO BE TO BE REDUCED FOR PARKING REQUIREMENTS, DEPENDING ON ULTIMATE EXPANSION AREA AND PARKING NEEDS.

**COMMUNITY CENTER**



**POTENTIAL LONG TERM COMMUNITY CENTER EXPANSION**

