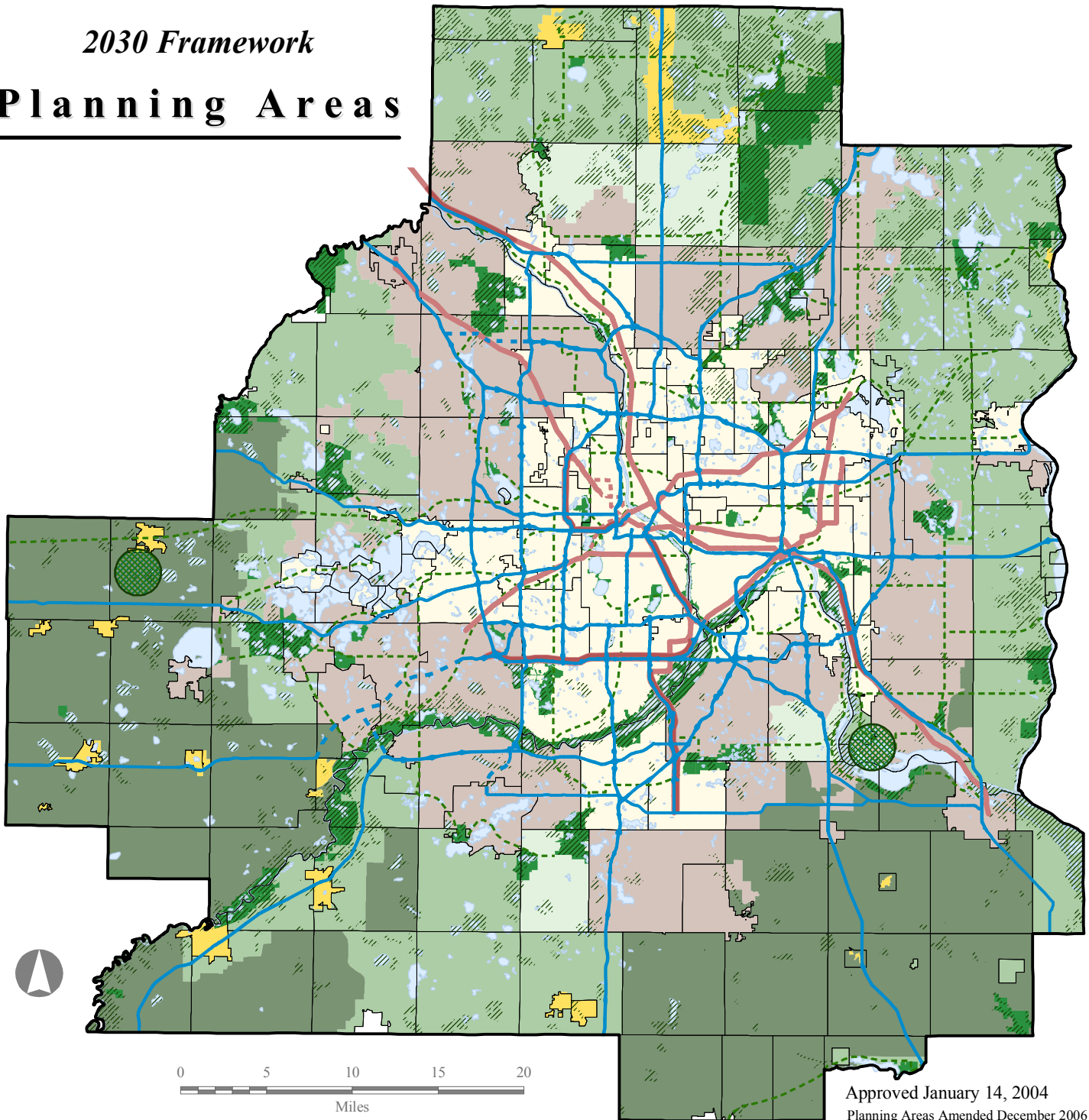


2030 Framework

Planning Areas



Approved January 14, 2004
 Planning Areas Amended December 2006

NOTE: Please refer to the Comprehensive Plans Composite map or the Regional Systems maps for the most recent information. These maps are available at the Metropolitan Council Data Center (651) 602-1140.

Geographic Planning Areas		Additional Information	
Urban Planning Areas	Rural Planning Areas	Regional Natural Resource Areas (includes Terrestrial and Wetland Areas) SOURCE: Metro DNR in coordination with the Metropolitan Council	Regional Trail
Developing Area	Rural Center	Regional Park	Transit 2025 Corridor
Developed Area	Agricultural	Proposed Regional Park	Principal Arterial
	Diversified Rural		Open Water
	Rural Residential		